



**SAADA TECHNOLOGIE**  
Reliable Industrial Services

# TABLE OF CONTENT



01. Company Overview	01
02. Our Purpose	02
03. Company Values	03
04. Our Services	04
05. Project Experience And Involvement	07
06. Our Team	35
07. Brands Featured in Our Project Experience	36
08. Engineering Expertise	37
08. Why Choose US?	38
09. SAADA TECHNOLOGIE in Action	39

---



# COMPANY OVERVIEW

---

## About Us

**SAADA TECHNOLOGIE** is a trusted partner for industrial installation, relocation, and maintenance in the food & beverage industry. With solid experience on leading equipment brands, we deliver practical and reliable solutions adapted to each project. Our commitment to safety, quality, and execution ensures efficient and dependable operations across all our interventions.

# OUR PURPOSE

---

## Mission

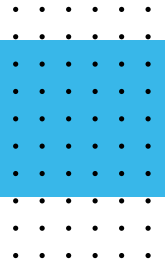
At **SAADA TECHNOLOGIE**, our mission is to support the food and beverage industry by providing expert services in industrial installation, relocation, optimization and maintenance. With deep technical know-how and hands-on experience on production lines, we strive to deliver reliable, efficient, and safe solutions tailored to the specific needs of each client. We are committed to upholding the highest standards in every project.

## Vision

We envision a future where **SAADA TECHNOLOGIE** actively collaborates with the global technology leaders to bring world-class engineering and support to production environments. We aim to expand capabilities, share knowledge, and deliver innovative solutions that enhance performance, sustainability, and value for manufacturers in the food and beverage sector.



# CAMPANY VALUES



Our work is guided by a strong commitment to innovation, excellence, integrity, and safety. We deliver forward-thinking, reliable solutions tailored to the unique needs of each client while upholding transparency and ethical practices across all operations.

Collaboration and teamwork are at the heart of our culture, and we actively seek to build value-driven partnerships with the industry leaders. We continuously invest in learning and improvement to stay at the forefront of industrial advancements and deliver lasting impact in the food and beverage sector.

In line with our core principles and company ethics, Saada Technologie does not engage in any installation, maintenance, or services related to the alcoholic beverage industry. This policy reflects our values and the nature of the markets we choose to serve.



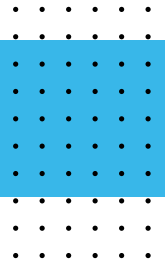


## OUR SERVICES



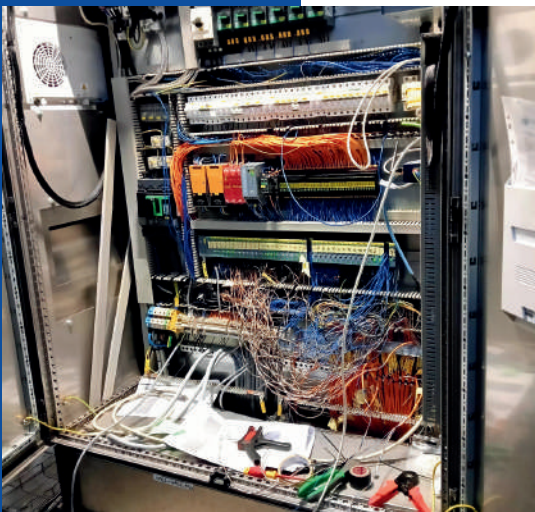
At SAADA TECHNOLOGIE, we offer a range of industrial services within the food and beverage industry, supporting production operations with hands-on expertise and reliable technical solutions. Below are the core services we provide:

# CORE SERVICES



## ⚙️ Installation & Relocation of Beverage Production Lines

We provide efficient installation and relocation of beverage production lines, including protocol tests to ensure optimal performance and compliance with industry standards.



## ⚙️ Industrial Maintenance & Automation

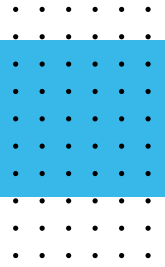
Our team provides preventive maintenance, troubleshooting, and automation upgrades to improve efficiency.



## ⚙️ Industrial Piping & Welding Solutions

Custom piping systems and networks, along with fabrication of tanks, stainless steel equipment, and other inox-related works, tailored to industrial requirements.

# CORE SERVICES



## ⚙️ Industrial Electrical Systems & Safety

Advanced electrical installations, panel design, electrical cabinets, cabling, TGBTs while strictly adhering to HSE standards to ensure safe and compliant operations.



## ⚙️ Process Engineering & Design

Optimized production processes to enhance efficiency, reduce operational costs, and improve overall performance through strategic planning and modern engineering solutions.



## ⚙️ Lifting, Handling & Heavy Equipment Installation

Transport, positioning, and installation of industrial equipment using appropriate lifting and handling methods. We ensure safe handling, accurate placement, and proper integration of machinery on site.



## PROJECT EXPERIENCE AND INVOLVEMENT

**SAADA TECHNOLOGIE** has solid experience in production line installation and maintenance within the food and beverage industry. We have participated in various projects, carrying out installation, maintenance, and on-site interventions with a strong focus on quality and safety.

Our teams have worked directly on production lines, gaining practical hands-on experience in real industrial environments. Each project reflects our commitment to reliable execution and proper completion of work.



# PROJECT EXPERIENCE & INVOLVEMENT

## TAGHASTE, INSTALLATION, KHS LINE, SOUK AHRAS – ALGERIA- 2026

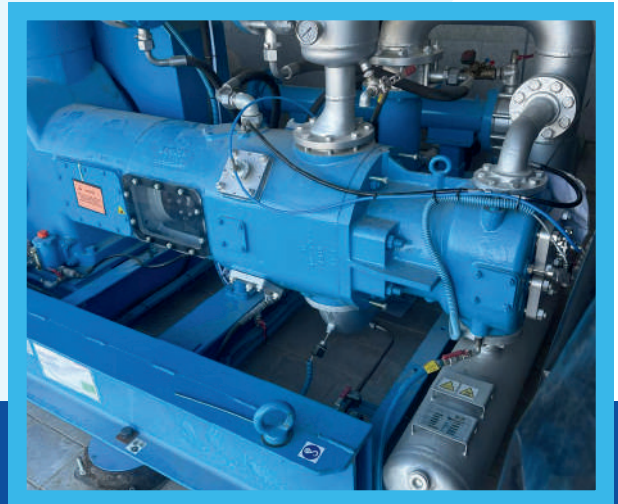
In 2026, SAADA TECHNOLOGIE carried out the mechanical, electrical installation and piping work for a KHS LINE for TAGHASTE in SOUK AHRAS.



# PROJECT EXPERIENCE & INVOLVEMENT

## COMPRESSOR INSTALLATION FOR MULTIPLE BRANDS

Since 2025, we have successfully completed the installation of seven compressors for multiple brands, including Arwa (2 compressors), Rawi (Hayat water), Chabi, Nougatine (2 compressors), and Qania. This achievement reflects our team's efficiency, technical expertise, and commitment to delivering reliable and high-quality installations across all projects.



# PROJECT EXPERIENCE & INVOLVEMENT

## QNIAA, MECHANICAL, ELECTRICAL, PIPING INSTALLATION, NEWAMSTAR LINE, AKBOU, ALGERIA-2026

In 2026, SAADA TECHNOLOGIE performed the mechanical and electrical installation of a Newamstar beverage production line at the QNIAA facility in Akbou, Algeria. The scope covered the integration of a 40-bar industrial air compressor, boiler system, and utility networks, including piping for compressed air and high-pressure services.



# PROJECT EXPERIENCE & INVOLVEMENT

## SOFIPAL, ELECTRICAL INSTALLATION, CHLEF, ALGERIA- 2026

In 2026, SAADA TECHNOLOGIE carried out the complete electrical installation of an industrial facility for SOFIPAL in Chlef, Algeria, dedicated to the production of baking powder. The scope covered all electrical works, including infrastructure, power distribution and instrumentation systems, along with equipment connections to ensure safe and reliable operation.



# PROJECT EXPERIENCE & INVOLVEMENT

## **NOUGATINE, INSTALLATION, TWO KHS LINES, 45 000 B/H ROUIBA, ALGERIA- 2026**

In 2026, SAADA TECHNOLOGIE carried out the installation of two KHS production lines for NOUGATINE in Rouiba, Algeria, ensuring efficient setup and integration of the equipment for reliable industrial operation

The logo for Nougatine, featuring the word "nougatine" in a blue, lowercase, sans-serif font with a registered trademark symbol. A small green leaf icon is positioned above the letter 'i'.

# PROJECT EXPERIENCE & INVOLVEMENT

## **KHS, SUPERVISION, KHS LINE, ELECTRICAL & MECHANICAL SUPERVISION , CHABI - 2025**

In 2025, SAADA TECHNOLOGIE was appointed by KHS to provide electrical and mechanical supervision for the installation of a KHS production line, ensuring that all installation activities met the required technical standards and specifications.



# PROJECT EXPERIENCE & INVOLVEMENT

## **KHS, SUPERVISION, KHS LINE, ELECTRICAL & MECHANICAL SUPERVISION , DJOUA – 2025**

In 2025, SAADA TECHNOLOGIE was appointed by KHS to provide electrical and mechanical supervision for the installation of a KHS production line, ensuring that all installation activities met the required technical standards and specifications.



# PROJECT EXPERIENCE & INVOLVEMENT

## CHOCO DADA, MECHANICAL REPOSITIONING, BARAKI, ALGERIA – 2025

In 2025, SAADA TECHNOLOGIE carried out the mechanical repositioning of industrial equipment for Choco Dada in Baraki, Algeria, including the dismantling and reassembly of mechanical systems.



# PROJECT EXPERIENCE & INVOLVEMENT

## HAYAT, INSTALLATION, KHS LINE, 28000 B/H BISKRA, ALGERIA- 2025

In 2025, SAADA TECHNOLOGIE successfully executed the mechanical and electrical installation of a high-speed KHS bottling line with a capacity of 28,000 bottles per hour, including the boiler system, piping network, air compressor, water treatment station, and CIP (Cleaning-in-Place) system, for the HAYAT brand in Biskra, Algeria (SARL RAWI).



# PROJECT EXPERIENCE & INVOLVEMENT

## **ARWA, SUPERVISION AND LIFTING, PET SODA, KRONES LINE ERGOBLOC A L'ETAGE 24000BPH SETIF ALGERIA-2025**

In 2025, our team successfully supervised the installation and commissioning of a KRONES PET soda production line (Ergobloc) at the ARWA facility in Sétif, Algeria. Operating at a capacity of 24,000 bottles per hour (BPH), along with lifting and handling the equipment.



# PROJECT EXPERIENCE & INVOLVEMENT

## ABULJADAYEL, INSTALLATION, PET LINE KRONES, 28,000 B/H, SAUDI ARABIA – 2024

In 2024, we participated in the installation of a PET bottling line for Abuljadayel in Jeddah, Saudi Arabia. The installation was executed with precision.



# PROJECT EXPERIENCE & INVOLVEMENT

## **ABULJADAYEL, INSTALLATION, GLASS BOTTLE LINE, KRONES, 40,000 B/H, SAUDI ARABIA – 2024**

For Abuljadayel in Saudi Arabia, we participated in the installation of a high-speed glass bottling line capable of producing 40,000 bottles per hour.



# PROJECT EXPERIENCE & INVOLVEMENT

## ABULJADAYEL, INSTALLATION, WATER TREATMENT SYSTEM, KRONES, SAUDI ARABIA– 2024

In 2024, we participated in the installation of a water treatment system for Abuljadayel in Jeddah, Saudi Arabia.

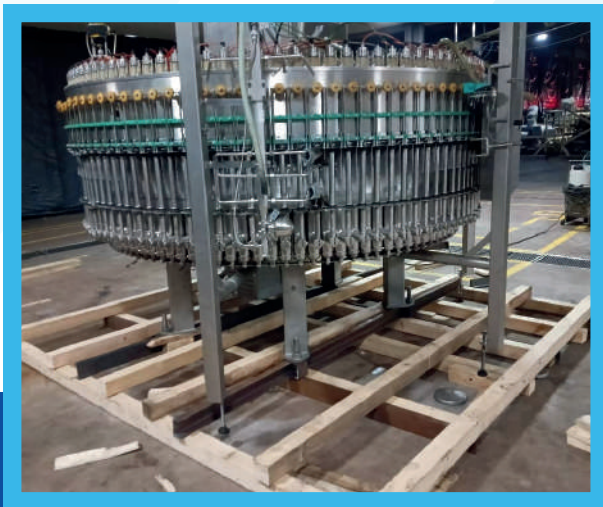


# PROJECT EXPERIENCE & INVOLVEMENT

## **COCA COLA, DISASSEMBLY, GLASS BOTTLE, KRONES, ALEXANDRIA, EGYPT – 2024**

In 2024, we have participated in the disassembly of a glass bottle line Krones in Alexandria, EGYPT in 2024, wrapped and packed.

WE DISASSEMBLED THE WET PART OF THE LINE, THE PALLETIZER AND THE DEPALLETIZER.



# PROJECT EXPERIENCE & INVOLVEMENT

## LA BELLE, INSTALLATION, CFT LINE, KHECHNA, ALGERIA – 2024

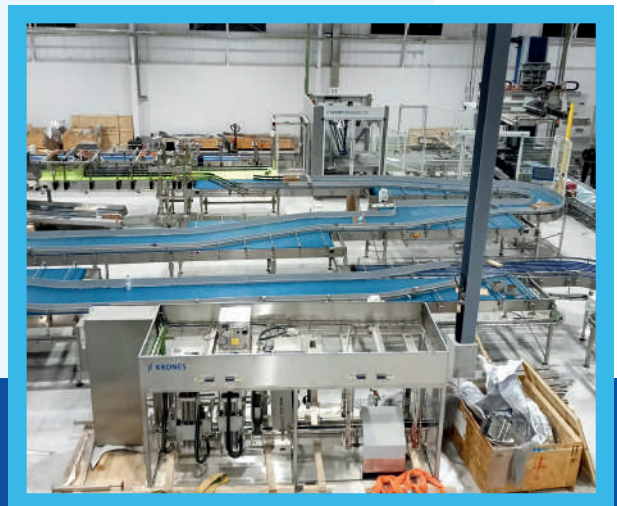
In 2024, SAADA TECHNOLOGIE carried out the installation of a CFT line for LA BELLE in Khemis El Khechna, Algeria. This line was used for the production of conserves products.



# PROJECT EXPERIENCE & INVOLVEMENT

## SHAMLAN WATER, INSTALLATION, PET LINE, KRONES, 80,000 B/H, YEMEN, SANA'A – 2023

In 2023, we participated in the installation of a PET bottling line for Shamlan Water in Sana'a, Yemen. This high-speed production line, designed to produce 80,000 bottles per hour, while maintaining top-tier quality standards.



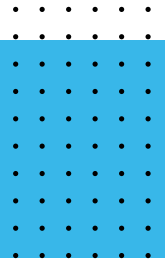
# PROJECT EXPERIENCE & INVOLVEMENT

## ARWA, INSTALLATION, PET LINE 5L, SMI LINE, SÉTIF, ALGERIA – 2023

In 2023, SAADA TECHNOLOGIE completed the installation of a 5L PET SMI line at the JUS LA BELLE company in Sétif, Algeria.



# PROJECT EXPERIENCE & INVOLVEMENT



## **EL SADAT CITY, INSTALLATION, PET LINE , KRONES, 36000 BPH , EGYPT– 2023**

In 2023, SAADA TECHNOLOGIE participated in the installation of a KRONES line at EL SADAT CITY in EGYPT, most of the work was mechanical.

# PROJECT EXPERIENCE & INVOLVEMENT

## ARWA, RELOCATION, PET LINE, COMPOSITION OF SMI/ACMI/ LINE, SÉTIF, ALGERIA– 2022

In 2022, SAADA TECHNOLOGIE handled the relocation of a PET bottling line composed of SMI and ACMI equipment at the ARWA site in Sétif, Algeria.



# PROJECT EXPERIENCE & INVOLVEMENT

## **AQUAFINA, RELOCATION, PET LINE, 45,000 B/H KRONES, LEBANON – 2022**

In 2022, we participated in the transfer of the Aquafina production line in Lebanon. This complex project involved relocating and reinstalling the entire production line while maintaining the standards for operational efficiency, safety, and quality.



# PROJECT EXPERIENCE & INVOLVEMENT

## ARWA, RELOCATION, CAN LINE, 24,000 C/H KRONES, SÉTIF, ALGERIA – 2022

In 2022, we successfully completed the relocation of a 24,000 C/h KRONES can line for ARWA in Sétif, Algeria. The project involved the full transfer and reinstallation of the line, carried out with strict adherence to safety, quality, and operational efficiency standards.



# PROJECT EXPERIENCE & INVOLVEMENT

## **QNIAA, INSTALLATION, PET LINE AND SYRUP ROOM, 24,000 B/H KRONES, AKBOU BEJAIA, ALGERIA – 2019**

In 2019, SAADA TECHNOLOGIE carried out the installation of a 24,000 B/h PET line from Krones at QNIAA in Akbou, Béjaïa, Algeria. The project also included the installation of the syrup room (mechanical work, electrical work, piping work).



# PROJECT EXPERIENCE & INVOLVEMENT

## **NCA, INSTALLATION, CAN LINE KRONES, 32000 C/H, ROUIBA, ALGERIA – 2018**

The installation of the Krones Can Line at NCA in Rouiba, Algeria, was successfully completed in 2018. This project introduced a high-capacity production line with a speed of 32,000 cans per hour.

The logo for Rouiba features the brand name in a red, cursive script font. Below the text are three green leaves, with the largest leaf at the bottom right and two smaller ones to its left. The entire logo is set against a white background within a blue-bordered square.

# PROJECT EXPERIENCE & INVOLVEMENT

## **N'GAOUS, RELOCATION, SIDEL PET LINE, KHEMIS EL KHECHNA, ALGERIA – 2018**

In 2018, SAADA TECHNOLOGIE completed successfully the relocation of a SIDEL PET line of N'Gaous brand in Khemis El Khechna, Algeria.



# PROJECT EXPERIENCE & INVOLVEMENT

## MANBAA, INSTALLATION, PET LINE KRONES, 28000 B/H, BISKRA, ALGERIA – 2018

Participation in the installation of the Krones PET Line at Manbaa in Biskra, Algeria, was successfully carried out in 2018. The project involved contributing to the delivery of a production line with a capacity of 28,000 BPH.



# PROJECT EXPERIENCE & INVOLVEMENT

## **IFRI, INSTALLATION, CAN LINE KRONES, 45000C/H, AKBOU BÉJAIA, ALGERIA – 2016**

Participation in the installation of the Krones Can Line at Ifri in Akbou, Béjaia, Algeria, was successfully carried out in 2016. The project involved contributing to the introduction of a production line with a capacity of 45,000 cans per hour.



# PROJECT EXPERIENCE & INVOLVEMENT

## COCA-COLA, INSTALLATION, CAN LINE KRONES, 60000 C/H, ROUIBA, ALGERIA – 2016

Participation in the installation of the Krones Can Line at Coca-Cola in Rouiba, Algeria, was successfully carried out in 2016. The project involved contributing to the delivery of a production line with a capacity of 60,000 cans per hour.

The image shows the classic Coca-Cola logo in its signature red script font, centered within a white square that has a blue border.



## OUR TEAM

At **SAADA TECHNOLOGIE**, our strength lies in our people. Since 2016, we've built a multidisciplinary team of highly skilled members, each bringing specialized expertise and a shared commitment to industrial excellence.

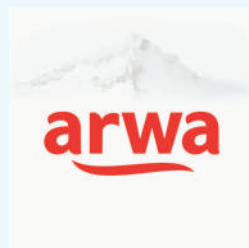
Our team is composed of:

- 09 Electrical Engineers and Technicians
- 14 Mechanical Engineers and Technicians
- 11 Automation Engineers and Technicians
- 03 Process engineers and technicians
- 14 Industrial Welding and piping technicians
- 04 Multi-Skilled Technicians

Our combined experience and hands-on knowledge allow us to deliver reliable, innovative, and tailor-made solutions to meet the evolving needs of the food and beverage industry.

# BRANDS FEATURED IN OUR PROJECT EXPERIENCE

The following brands represent a selection of projects in which our team participated, contributing to the installation and implementation of beverage production lines in collaboration with international and local partners and contractors.

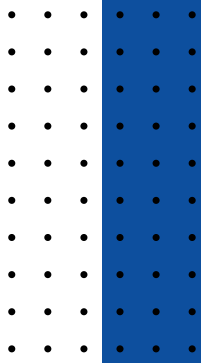


# ENGINEERING EXPERTISE ACROSS MAJOR PRODUCTION LINE BRANDS

The following brands represent a selection of production line technologies on which our engineering team has developed solid hands-on expertise throughout their professional experience.

This list is not exhaustive and reflects part of our broader capability to operate across a wide range of industrial systems.





# WHY CHOOSE US?

Here's why we believe **SAADA TECHNOLOGIE** should be seriously considered when engaging in a project within the beverage industry;

- All-in-One Industrial Partner:** We provide a comprehensive range of services, eliminating the need to coordinate multiple providers.
- Industry Expertise:** Years of experience in production line installation, industrial automation, and engineering solutions for the food & beverage industry.
- Innovative Approach:** We stay at the forefront of technological advancements, ensuring the client benefits from cutting-edge tools and strategies.
- Global Reach:** Successfully executed projects across multiple countries in Africa, Asia, and the Middle East.
- Commitment to Quality:** Adhering to global safety and quality standards, ensuring reliability.
- Cost-Effective Solutions:** Our services strike the perfect balance between quality and price – delivering reliable, high-performance results without excessive costs.
- Short Execution Time:** Our efficient processes and skilled team enable us to complete installations and interventions in record time.





# **SAADA TECHNOLOGIE**

**NEXT-LEVEL SOLUTIONS  
FOR THE FOOD & BEVERAGE  
INDUSTRY**



Ouled Moussa, Boumerdes, Algeria

+213 557 53 28 65

[contact@saadatech.com](mailto:contact@saadatech.com)

<https://saadatech.com>